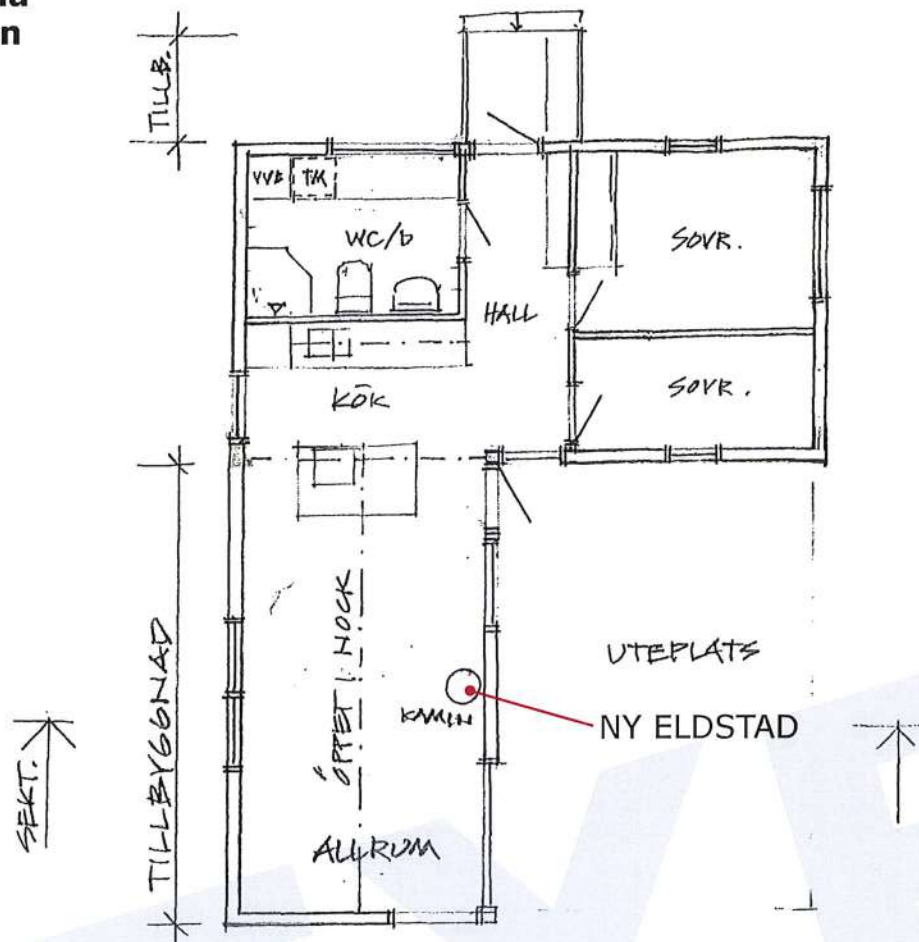


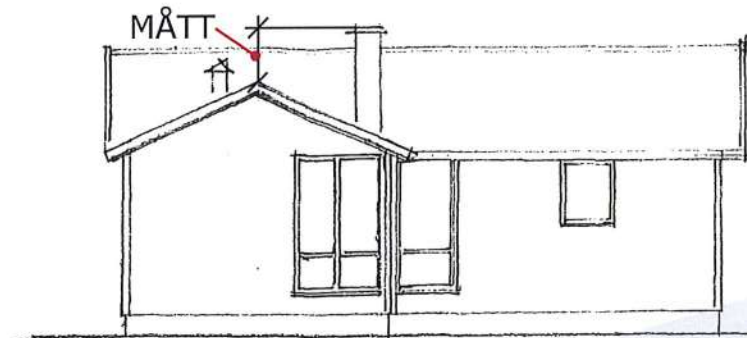


Tomelilla
kommun

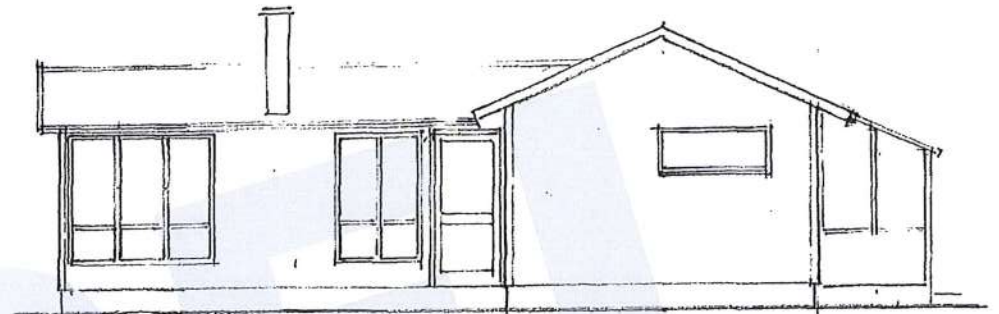
EXEMPELHANDLING ELDSTAD OCH RÖKKANAL



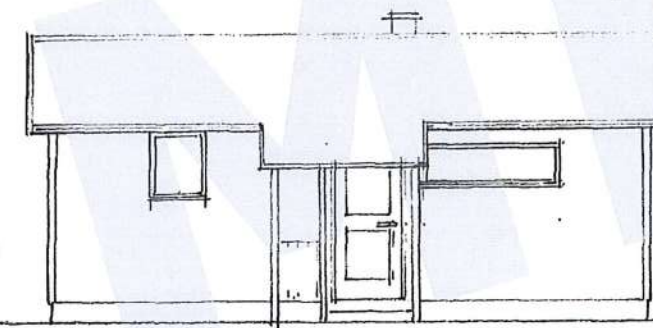
PLAN



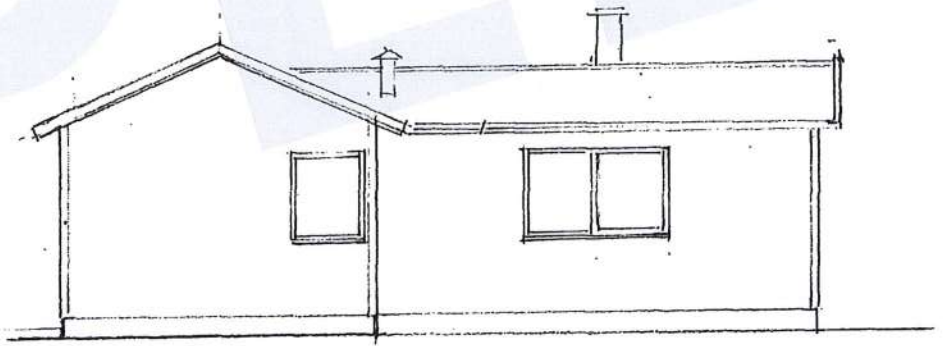
FASAD VÄSTER



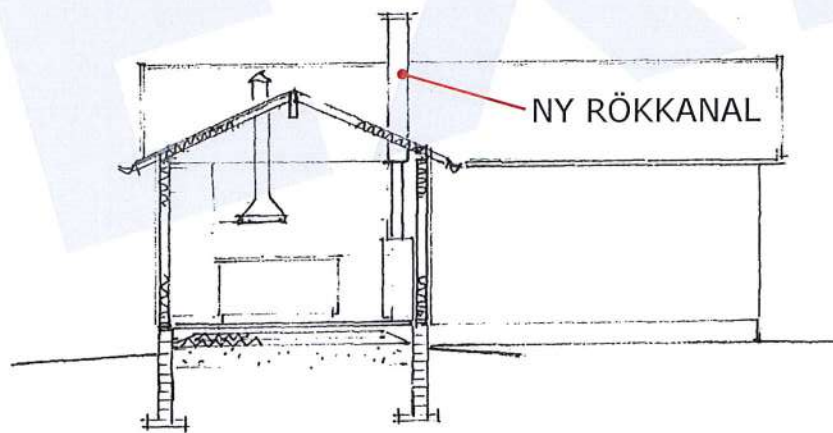
FASAD SÖDER



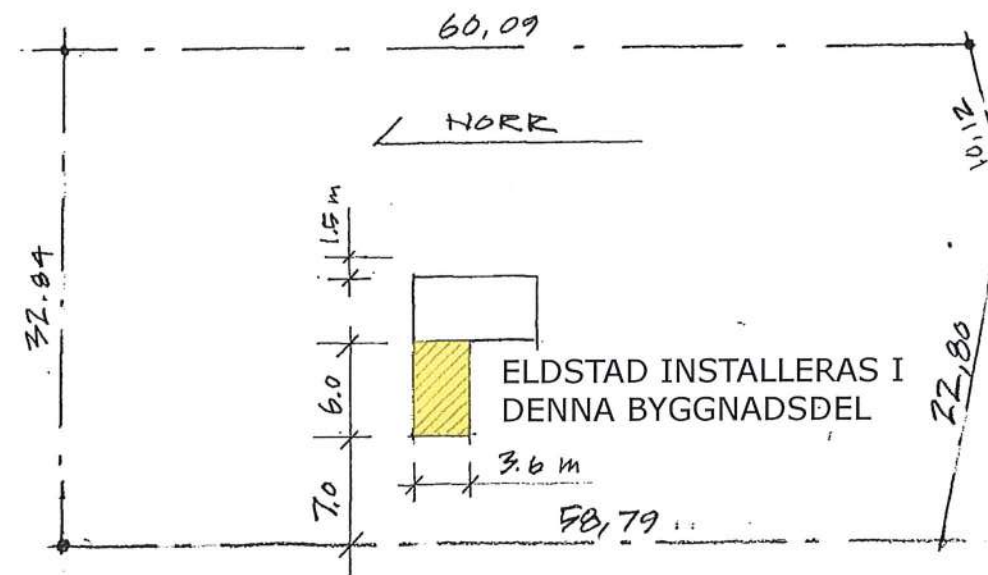
FASAD ÖSTER



FASAD NORR



SEKTION



SITUATIONSPÅN skala 1:500

Tomestora 32:8

Österlens kommun
Anmälan eldstad och rökkanal

Situationsplan, plan-, fasad-
och sektionsritning

Skala 1:500 och 1:100

Ritad av: Rita Exempel
2018-01-01

Ritningsnummer: A01